



Technical data sheet 3400.K2.I

Stainless steel L-shape radiator tubes for GOLDFIX axial system – 3400 line

Contents

DESCRIPTION	3
ADVANTAGES	3
COMPONENTS AND MATERIALS	3
SOLUBILIZATION TREATMENT	3
DIMENSIONS	5
FIXING KIT	5
ASSEMBLY INSTRUCTIONS	6

3400.K2.I

Stainless steel L-shape radiator tubes for GOLDFIX axial system – 3400 line



DESCRIPTION

The L-shape tube 3400.K2.I is used to connect the radiator to the floor piping system.

ADVANTAGES

- Non-toxicity of stainless steel
- High resistance to corrosive agents
- Antioxidant: does not undergo alterations over time
- 100% recyclable as it is composed solely and exclusively of stainless steel, without other metals or welding alloys
- No chemical or galvanic surface treatment
- Ecological production cycle: without galvanic treatments, without residues of polishing dust, without oxides dispersed during brazing
- Considerable mechanical resistance, since the welding process melts the two components into a single piece

COMPONENTS AND MATERIALS

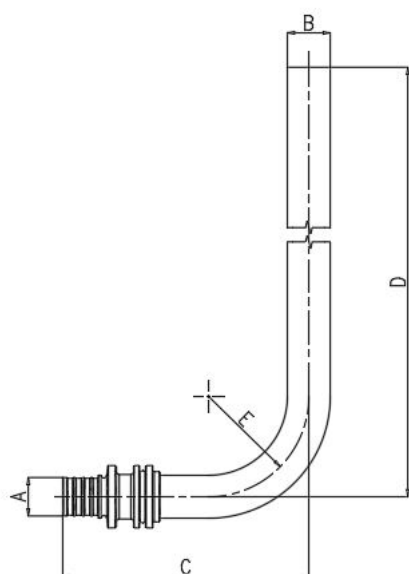
COMPONENT	MATERIAL
Fitting	AISI 3030 Stainless steel
Pipe	AISI 304 Stainless steel
Filler wire	AISI 308 Stainless steel

SOLUBILIZATION TREATMENT

The solubilization treatment guarantees:

- Elimination of metals tensions
- Elimination of welding oxides
- Better product finishing and consequent uniformity of color and aesthetics

DIMENSIONS



CODE code	A (Fitting)	B (Tube)	C	D	E	WEIGHT (Kg)
3400K2I161500 A	16x2,2	15x1	86	250	R35	0.128
3400K2I161510 A	16x2,2	15x1	86	1000	R35	0.375

FIXING KIT

For a proper fixation, it is recommended to use the bracket AC0090H3400K2H (refer to the relevant technical data sheet)

ASSEMBLY INSTRUCTIONS

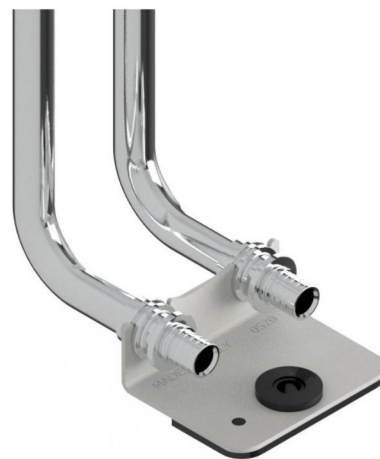
Insert the noise reduction support onto the bracket.



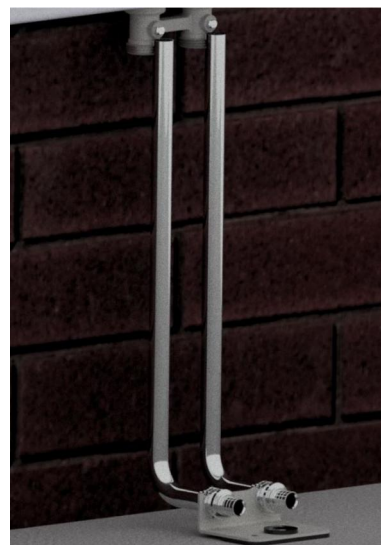
Fasten the noise reduction washer to the seat on the support in order to lock the three elements in a single block



Fit the L-shape radiator tube 3400.K2 to the bracket.



Cut the steel tubes perpendicularly to the desired length, paying attention to the part of the tube that fits into the Eurocone seat of the H valve.



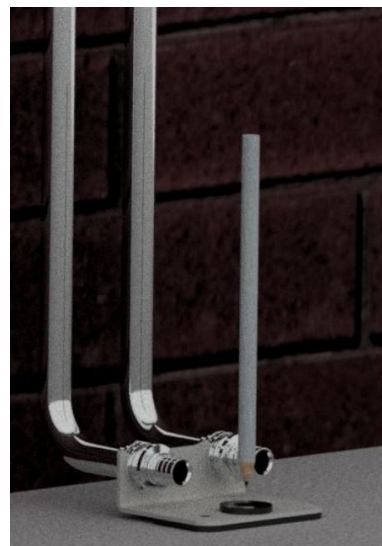
Detail of the tube cutting area. The cut of the tube must be perpendicular and must not have burrs.



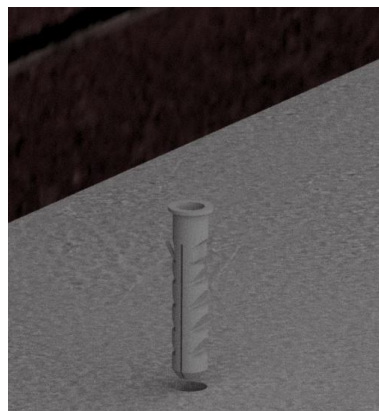
Insert the connection kits 5700H4N051500A (for copper pipe) or 7E00H4N051500A (for copper/steel pipe) on the pipes and 3400.K2 items in the Eurcone seats of the H valve.



Manually screw the connection kits and mark the fixing point of the bracket with a pencil or marker.



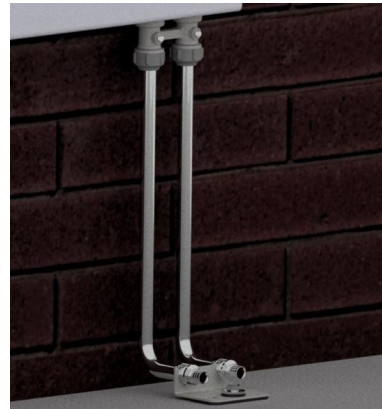
Unscrew the connection kit, remove the pipes and drill the fixing hole of the floor bracket. Insert the gusset into the hole made in the floor.



Engage the 3400.K2 items again in the Eurocone seats of the H valve and manually tighten the kits 5700H4N051500A or 7E00H4N051500A. Then screw the anchor bolt to the gusset (taking care to put the fixing washer on).



Fix the connection kits 7E00H4N051500A or 5700H4N051500A according to the instructions in their technical data sheets.



Connect to the circuit according to the procedure indicated in the technical data sheet of 3400 range.



Detail of the completed connection (concealed).



Detail of the completed connection (visible).





GENERAL FITTINGS SPA

Via Golgi 73/75, 25064 Gussago (BS) - ITALY

te. +39 030 3739017

www.generalfittings.it